

# THE SAN DIEGO CRUISER ASSOCIATION

## OCTOBER 19, 2019



<b>Commodore</b>	<b>Steve Greene</b>
<b>Vice Commodore:</b>	<b>Magnus Karlsson</b>
<b>Rear Commodore:</b>	<b>David Weimer</b>

---

### Commodore's Comments

I would like to thank Coronado Cays Yacht Club for providing the venue to support the Oct 19th Rally and for the great lunch, and to Dave Murree Rear Commodore of CCYC for assisting in handing out the trophies.

With many low scores, under 1%, the competition for the top three was very close. Congratulations to David Weimer with a 1<sup>st</sup> place finish with a winning score of .5772 % error rate and only 0.1046 separating the top three. Also, congratulations to Division Two winner Bill Roush with a score of 2.9052. There were three division 2 participants for this Rally, thanks for the support and best of luck in the final race in November.

Please mark your calendars for the Change of Watch, scheduled for Sunday December 1st at SWYC. Please plan on attending. A flyer will be coming out shortly providing the details of this event.

Next month's Rally will be the final for 2019, so plan on participating.

See you on the water.

Steve Greene

### Vice Commodore's Comments

The conditions could not have been better for this fall, Harbor 3/4 race. 70+ degrees, almost no wind and minimal flood current. The race was supposed to be very simple, start at Bridge Pier 19 and head for Navy 19 via CB21. Piece of cake until Bill Roush on Albatross, who was first out of gate, reported that a Coast Guard vessel was tied up at the Navy 19 mooring. Some

**San Diego Observer Association**

**Tayna Weimer: Chief Observer**

**Jay Hudson: Assistant Chief Observer**

# **THE SAN DIEGO CRUISER ASSOCIATION**

## **OCTOBER 19, 2019**

of us tried to contact the Coast Guard and let them know that we were having a Predicted Nav contest, and we would be approaching Navy 19 at close distance. However, they did not respond. The majority of competitors managed to either go behind the stern of the Coast Guard ship or round the bow, except for Jeff Calabrese on Living Well. As Jeff approached the Coast Guard, they finally woke up and decided that they would leave the mooring. Jeff had to take a time out.

As we were going down the bay toward CB 40 and Priv C, the currents were a bit less than predicted. The top three guys clearly picked up on this and adjusted their speed accordingly. I am not sure I understand how they do it - how can anyone tell the difference between 0.4 and 0.2 knot currents? Pretty remarkable.

In Division I, David Weimer on Just Dessert again managed to get the gold medal with 0.5772 % error – almost 500 club. Congratulation David, well done. Ed Denaci took second place with 0.5803% followed by Jeff Calabrese with 0.6818% errors. Garry Adalian come in 4<sup>th</sup> with 0.78429% followed by Bob Ehlers with 0.7833% error. That is, 5 competitors under 1% error. According to my high-level calculation, that means that only 12 second separated 1<sup>st</sup> place from 5<sup>th</sup> place. It is getting tough out there!

In Division II, Bill Roush on Albatross took first place followed by Stan Smith on Mariana Queen. Congratulations. The percent errors produced by Division II racers are quickly coming down. Next year, when they are all in Division I, is looking to become very competitive.

Thank you all for coming out and racing. We are looking forward to seeing you all at the final Harbor 4/4 race next month.

Magnus Karlsson, VC.

**San Diego Observer Association**

**Tayna Weimer: Chief Observer**

**Jay Hudson: Assistant Chief Observer**



1011 Anchorage Lane, San Diego, California 92106 • Tel (619) 221-8400 • Fax (619) 224-3059 • Web: [www.sdyc.org](http://www.sdyc.org)

## **San Diego Yacht Club & San Diego Cruiser Association**

### **Invitational Predicted Log/Cruiser Navigation Contest Harbor Series 4/4 November 16, 2019**

- Contest:** Sanctioned by the San Diego Cruiser Association (SDCA).  
Sponsored by the San Diego Yacht Club. Contestants must be a member of a SDCA member Club or organization.
- Rules:** SDCA Rules: April 2017 apply. Monitor VHF channel 9 and 16 if possible. Pass all marks and route points within 100 feet, Official finish time is 10:30 AM PST. Phone or Email your predictions to Rajeev Jain at 858-705-5261 or [sdpredictedlog@gmail.com](mailto:sdpredictedlog@gmail.com)  
Turn in all log forms to the official scorer at SDYC – Phone in results ASAP to Rajeev Jain at 858-705-5261. Delivery of the scorings sheet is ultimately the contestant's responsibility.
- Committee:** Bob Ehlers, Ed Denaci and Steve Greene.  
Chief Observer: Tanya Weimer
- Observers:** Qualified members of the San Diego Observer Association. For your Observer assignments, call Tanya Weimer at 404-895-8361 or email [sdpredictedlog@gmail.com](mailto:sdpredictedlog@gmail.com)
- Chart:** The current edition of charts 18772, 18773 and 18765
- Trophies:** Division I: 1<sup>st</sup>, 2<sup>nd</sup> and 3<sup>rd</sup>, Division II 1<sup>st</sup> *And DAL*
- Berthing:** For berthing assignments contact the SDYC Dock Master at (619)758-6308.
- Refreshments:** No host bar and complimentary lunch will be served by San Diego Yacht Club at about 12:30. The SDCA will hold their semi-annual general meeting after lunch and trophy presentations.
- Trophies:** CYC, CCYC and SDYC members - Please bring trophies awarded last year for engraving.

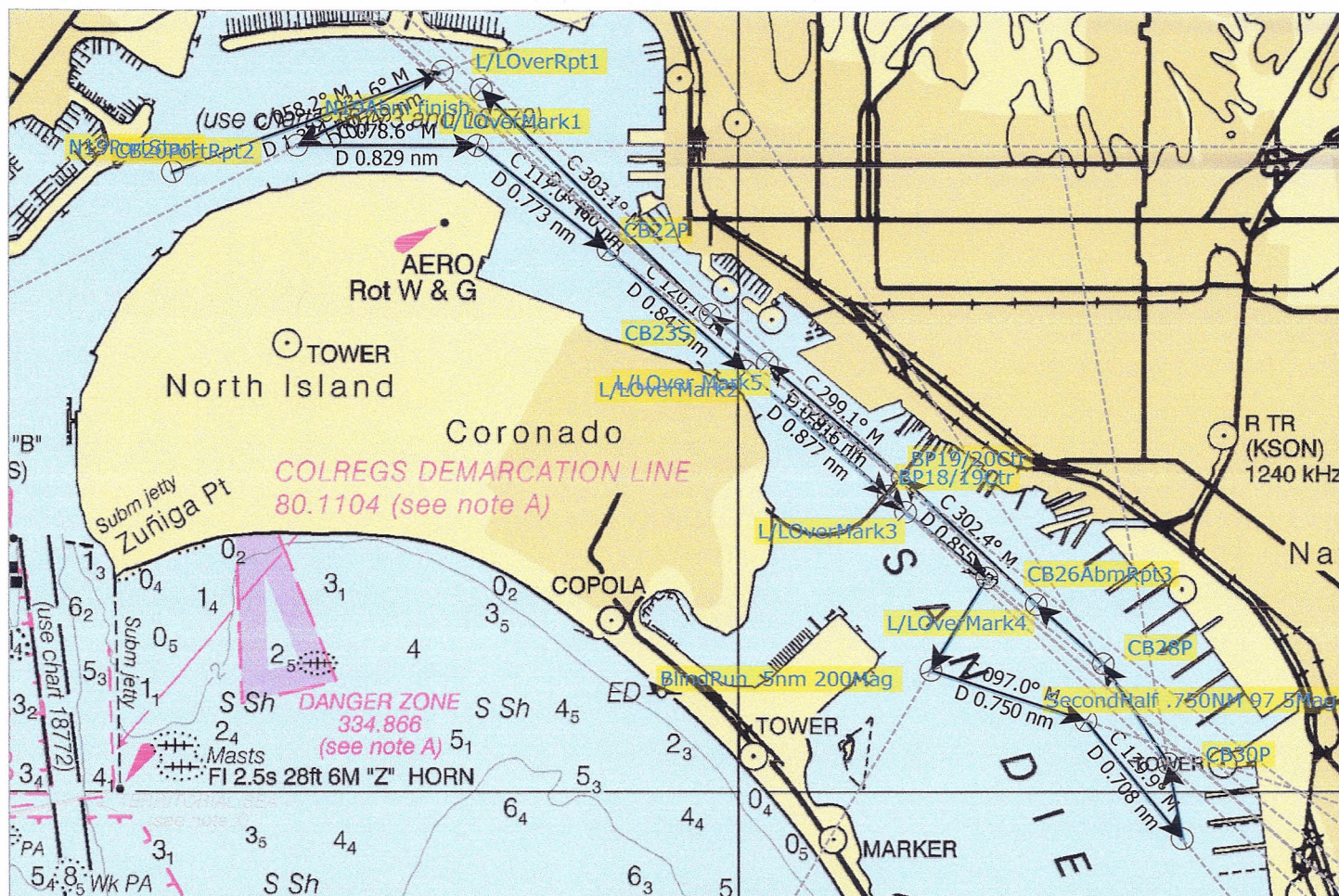
**San Diego Yacht Club**  
**San Diego Cruiser Association**  
**November 16 2019**  
**Spring 4/4**

<u>Event</u>	<u>Location</u>	<u>Pass</u>
<b>Start</b>	<b>CB19</b>	<b>Port</b>
<b>Rpt1</b>	<b>32 43.351N 117 11.628W</b>	<b>Over</b>
<b>Rpt2</b>	<b>CB20</b>	<b>Port</b>
<b>Mark1</b>	<b>32 43.011N 117 11.436W</b>	<b>Over</b>
<b>Mark2</b>	<b>32 41 970N 117 09.963W</b>	<b>Over</b>
<b>Mark3</b>	<b>32 41.313N 117 09.090W</b>	<b>Over</b>
<b>Rpt3</b>	<b>CB26</b>	<b>Abm</b>
<b>Blind Run</b>	<b>.5nm 200 Mag</b>	<b>Over</b>
<b>***Keep watch running Start Second Half of Run***</b>		
<b>Blind Run</b>	<b>.75 nm 97.5 Mag</b>	<b>Over</b>
<b>***Stop watch and zero watch***</b>		
<b>Rpt4</b>	<b>CB32</b>	<b>Port</b>
<b>Mark4</b>	<b>32 40.883N 117 08.375W</b>	<b>Over</b>
<b>Mark5</b>	<b>32 42.004N 117 09.846W</b>	<b>Over</b>
<b>Finish</b>	<b>N19</b>	<b>Abm</b>
<b>Distance 12.775 nm</b>		



# Harbor 4 of 4 19

Total Distance: 12.775 nm Total Time: N/A Depart: not set ETA: N/A



NOT FOR NAVIGATION

Leg to	Bearing	Speed	Turn	Distance	ETA (TTG)	End Position
L/LOverRpt1	069.6° T 058.2° M	8.98 kn	143° to starboard	1.324 nm	N/A	32°43.351'N 117°11.628'W
CB20PortRpt2	243.0° T 231.6° M	8.98 kn	173° to starboard	0.749 nm	N/A	32°43.011'N 117°12.421'W
L/LOverMark1	090.0° T 078.6° M	8.98 kn	152° to port	0.829 nm	N/A	32°43.011'N 117°11.436'W
CB22P	128.4° T 117.0° M	8.98 kn	38° to starboard	0.773 nm	N/A	32°42.531'N 117°10.716'W
L/LOverMark2	131.5° T 120.1° M	8.98 kn	3° to starboard	0.847 nm	N/A	32°41.970'N 117°09.963'W
BP18/19Ctr	131.5° T 120.1° M	8.98 kn	0°	0.877 nm	N/A	32°41.389'N 117°09.182'W
L/LOverMark3	134.2° T 122.8° M	8.98 kn	2° to starboard	220 yd	N/A	32°41.313'N 117°09.090'W
CB26AbmRpt3	129.4° T 118.0° M	8.98 kn	4° to port	0.483 nm	N/A	32°41.006'N 117°08.646'W
BlindRun .5nm 200Mag	210.9° T 199.5° M	8.98 kn	81° to starboard	0.501 nm	N/A	32°40.577'N 117°08.952'W
SecondHalf .750NM 97.5Mag	108.4° T 097.0° M	8.98 kn	102° to port	0.750 nm	N/A	32°40.340'N 117°08.106'W
CB32PortRpt4	141.3° T 129.9° M	8.98 kn	32° to starboard	0.708 nm	N/A	32°39.787'N 117°07.579'W
CB30P	350.0° T 338.6° M	8.98 kn	151° to port	0.358 nm	N/A	32°40.140'N 117°07.653'W
CB28P	327.3° T 315.9° M	8.98 kn	22° to port	0.556 nm	N/A	32°40.607'N 117°08.010'W
L/LOverMark4	311.8° T 300.5° M	8.98 kn	15° to port	0.413 nm	N/A	32°40.883'N 117°08.375'W
BP19/20Ctr	313.8° T 302.4° M	8.98 kn	1° to starboard	0.855 nm	N/A	32°41.474'N 117°09.108'W
L/LOver Mark5	310.5° T 299.1° M	8.98 kn	3° to port	0.816 nm	N/A	32°42.004'N 117°09.846'W
CB23S	310.8° T 299.4° M	8.98 kn	0°	0.349 nm	N/A	32°42.232'N 117°10.160'W
N19Abm finish	314.5° T 303.1° M	8.98 kn		1.480 nm	N/A	32°43.268'N 117°11.414'W



**San Diego Yacht Club  
San Diego Cruiser Association  
November 16 2019  
Spring 4/4**

<u>Event</u>	<u>Location</u>	<u>Pass</u>
<b>Start</b>	<b>CB19</b>	<b>Port</b>
<b>Rpt1</b>	<b>32 43.351N 117 11.628W</b>	<b>Over</b>
<b>Rpt2</b>	<b>CB20</b>	<b>Port</b>
<b>Mark1</b>	<b>32 43.011N 117 11.436W</b>	<b>Over</b>
<b>Mark2</b>	<b>32 41 970N 117 09.963W</b>	<b>Over</b>
<b>Mark3</b>	<b>32 41.313N 117 09.090W</b>	<b>Over</b>
<b>Rpt3</b>	<b>CB26</b>	<b>Abm</b>
<b>Blind Run</b>	<b>.5nm 200 Mag</b>	<b>Over</b>
<b>***Keep watch running Start Second Half of Run***</b>		
<b>Blind Run</b>	<b>.75 nm 97.5 Mag</b>	<b>Over</b>
<b>***Stop watch and zero watch***</b>		
<b>Rpt4</b>	<b>CB32</b>	<b>Port</b>
<b>Mark4</b>	<b>32 40.883N 117 08.375W</b>	<b>Over</b>
<b>Mark5</b>	<b>32 42.004N 117 09.846W</b>	<b>Over</b>
<b>Finish</b>	<b>N19</b>	<b>Abm</b>

**Distance 12.775 nm**

CONTEST FINISH TIME MODULE

10/20/2019

CONTEST: HARBOR 4 OF 4

SAN DIEGO CRUISER ASSOCIATION

FASTEST BOATS GO FIRST

NOVEMBER 16, 2019

**Note : Pacific Standard Time**

DISTANCE

**12.775**

OFFICIAL FINISH

**10:30:00 AM**

START SPACE

**0:03:00**

SDCA CONTESTANT	BOAT SPEED	TRANSIT TIME (MIN)	TRUNC HOURS	TRUNC MIN.	TRUNC SEC.	ELAPSED TIME	NOMINAL START TIME	CONTESTANT FINISH TIME
EHLERS	<b>8.93</b>	85.8	1	25	50	1:25:50	8:01:33 AM	<b>9:27 AM</b>
ELOVITZ	<b>8.60</b>	89.1	1	29	8	1:29:07	8:04:33 AM	<b>9:33 AM</b>
CALABRESE	<b>8.52</b>	90.0	1	29	58	1:29:57	8:07:33 AM	<b>9:37 AM</b>
SALERNO	<b>8.50</b>	90.2	1	30	11	1:30:10	8:10:33 AM	<b>9:40 AM</b>
MUIR	<b>8.50</b>	90.2	1	30	11	1:30:10	8:13:33 AM	<b>9:43 AM</b>
DENACI	<b>8.50</b>	90.2	1	30	11	1:30:10	8:16:33 AM	<b>9:46 AM</b>
GREENE	<b>8.32</b>	92.1	1	32	8	1:32:07	8:19:33 AM	<b>9:51 AM</b>
WEIMER	<b>8.20</b>	93.5	1	33	29	1:33:28	8:22:33 AM	<b>9:56 AM</b>
SMITH	<b>8.20</b>	93.5	1	33	29	1:33:28	8:25:33 AM	<b>9:59 AM</b>
ADALIAN	<b>8.00</b>	95.8	1	35	49	1:35:48	8:28:33 AM	<b>10:04 AM</b>
PEARLMAN	<b>8.00</b>	95.8	1	35	49	1:35:48	8:31:33 AM	<b>10:07 AM</b>
CURTIS	<b>8.00</b>	95.8	1	35	49	1:35:48	8:34:33 AM	<b>10:10 AM</b>
KARLSSON	<b>7.40</b>	103.6	1	43	35	1:43:34	8:37:33 AM	<b>10:21 AM</b>
ZOHN	<b>7.34</b>	104.4	1	44	26	1:44:25	8:40:33 AM	<b>10:24 AM</b>
ROUSH	<b>7.20</b>	106.5	1	46	27	1:46:27	8:43:33 AM	<b>10:30 AM</b>

## NOVEMBER 16 2019 ENTRANCE

TIME	KNOTS	DIR	TIME	KNOTS	DIR
7:00	1.04	355	10:05	0.40	355
7:05	1.05	355	10:10	0.35	355
7:10	1.07	355	10:15	0.30	355
7:15	1.08	355	10:20	0.26	355
7:20	1.09	355	10:25	0.21	355
7:25	1.10	355	10:30	0.16	355
7:30	1.10	355	10:35	0.11	355
7:35	1.10	355	10:40	0.06	---
7:40	1.11	355	10:45	0.01	---
7:45	1.11	355	10:50	-0.04	---
7:50	1.10	355	10:55	-0.09	---
7:55	1.10	355	11:00	-0.14	173
8:00	1.09	355	11:05	-0.19	173
8:05	1.08	355	11:10	-0.25	173
8:10	1.07	355	11:15	-0.30	173
8:15	1.06	355	11:20	-0.35	173
8:20	1.05	355	11:25	-0.41	173
8:25	1.03	355	11:30	-0.46	173
8:30	1.02	355	11:35	-0.51	173
8:35	1.00	355	11:40	-0.57	173
8:40	0.98	355	11:45	-0.62	173
8:45	0.95	355	11:50	-0.67	173
8:50	0.93	355	11:55	-0.73	173
8:55	0.90	355			
9:00	0.88	355			
9:05	0.85	355			
9:10	0.82	355			
9:15	0.78	355			
9:20	0.75	355			
9:25	0.72	355			
9:30	0.68	355			
9:35	0.64	355			
9:40	0.60	355			
9:45	0.56	355			
9:50	0.52	355			
9:55	0.48	355			
10:00	0.44	355			



# SAN DIEGO CRUISING ASSOCIATION TOTALS FOR 2019

SPRING SPRING SPRING SPRING HARBOR HARBOR B WATER B WATER B WATER B WATER HARBOR HARBOR

NAME	CLUB	NACA#	BOAT NAME	YRTTL		JAN	FEB	MAR	APR	MAY	JUNE	JUNE2	JULY	AUG	SEPT	OCT	NOV	YR TOTAL
EHLERS, ROBERT	SDYC	936	J.B. & ME	8401		726	643	908	604	864	780	982	862	680	641	711	0	8401
WEIMER, DAVID	CYC / SDSPS	933	JUST DESERTS	7210		0	574	756	832	0	986	556	800	908	812	986	0	7210
ADALIAN, GARY	CCYC	800	JONATHAN	8369		556	986	604	756	413	917	812	987	832	726	780	0	8369
DENACI, ED	SWYC	937	GRAND ISLE	7029		385	848	832	984	638	0	0	924	604	897	917	0	7029
CALABRESE,JEFF	CYC	825	LIVING WELL	8149		982	917	376	376	976	848	641	675	528	982	848	0	8149
SALERNO, RALPH	SWYC	805	ANCORA	6333		471	506	984	452	525	711	300	737	756	385	506	0	6333
ZOHN, RICHARD	SGYC		PEARL	669		0	300	0	0	0	369	0	0	0	0	0	0	669
CURTIS, DAN	SGYC		INDIGO	300		0	0	300	0	0	0	0	0	0	0	0	0	300
PEARLMAN, MIKE	SWYC		BLACK PEARL	1768		0	0	0	0	0	506	0	362	300	300	300	0	1768
ROUSH, BILL	SWYC		ALBATROSS	2002		0	0	0	528	300	437	0	300	0	0	437	0	2002
SMITH, STAN	SWYC		MARIANA QUEEN	1541		0	0	0	300	0	0	385	487	0	0	369	0	1541
KARLSSON, MAGNUS	CYC/SDSPS	1017	LOLITA	7577		641	780	452	680	751	643	897	550	984	556	643	0	7577
BROOKS, PAUL	SGYC		CASA DEL PERRO II	0		0	0	0	0	0	0	0	0	0	0	0	0	0
ELOVITZ, MIKE	SWYC	981	LOVIT	2887		300	437	680	0	0	0	0	425	0	471	574	0	2887
MUIR, MARTY	SDYC	994	SEA ESTA	3312		812	369	0	908	0	300	471	0	452	0	0	0	3312
GREENE, STEVE	SWYC	824	LUNA GRANDE	4424		897	711	528	0	0	574	726	612	376	0	0	0	4424

CLUB TOTALS	YRTTL	JAN	FEB	MAR	APR	MAY	JUNE	JUNE2	JULY	AUG	SEPT	OCT	NOV		YR TOTAL
CYC	22,936	1,623	2,271	1,584	1,888	1,727	2,477	2,094	2,025	2,420	2,350	2,477	0		22,936
SWYC	25,984	2,053	2,502	3,024	2,264	1,463	2,228	1,411	3,847	2,036	2,053	3,103	0		25,984
CCYC	8,369	556	986	604	756	413	917	812	987	832	726	780	0		8,369
SGYC	969	0	300	300	0	0	369	0	0	0	0	0	0		969
MBYC	0	0	0	0	0	0	0	0	0	0	0	0	0		0
SDSPS	7,210	0	574	756	832	0	986	556	800	908	812	986	0		7,210
NYCSD	0	0	0	0	0	0	0	0	0	0	0	0	0		0
SDYC	11,713	1,538	1,012	908	1,512	864	1,080	1,453	862	1,132	641	711	0		11,713